

The background features several glowing, wireframe spheres of varying sizes and colors (purple, blue, white) set against a dark, gradient background. A network of white points and lines is overlaid on the scene, creating a sense of depth and connectivity.

Beamtree

Business update

17 May 2022

Beamtree

About us

Beamtree mobilises
the power of data and
automation for a **healthier,**
happier world.



Better Has No Limit: the problems we solve

The best health services deliver value for money by reducing avoidable mortality, waste, length of stay, readmissions and cost of care.

Complications are costly. One in nine patients who go to hospital suffer a complication, which costs Australian hospitals more than A\$5 billion a year.

15 per cent of hospital expenditure in high-income countries is due to human error or patients being adversely affected while in hospital.

Beamtree can help:

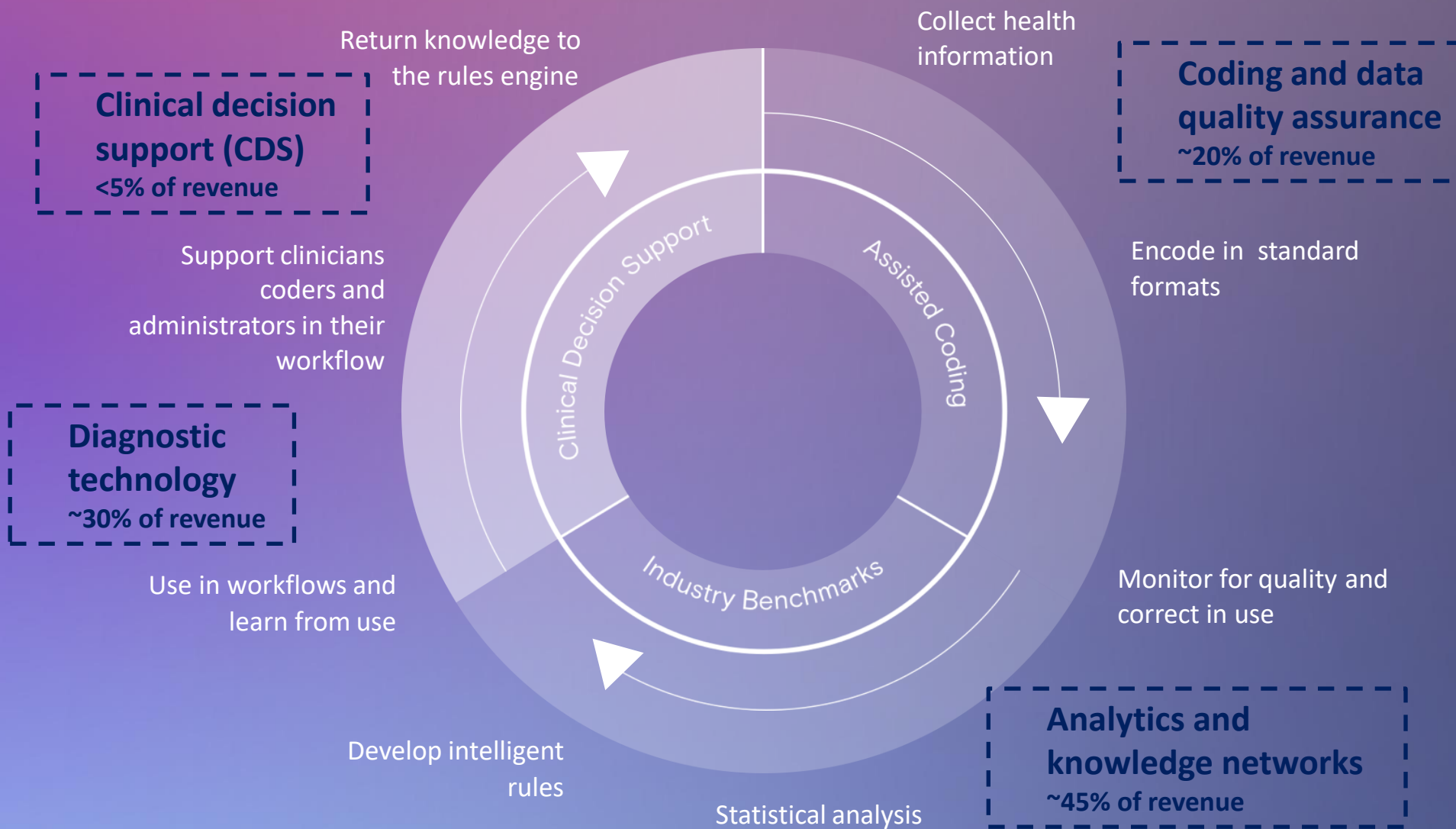
- Tackle unwarranted variation against best value patient care
- Improve healthcare access and resource allocation
- Offer revenue assurance
- Manage Risk
- Promote transparency
- Drive automation

Beamtree
Creating a better future for Health

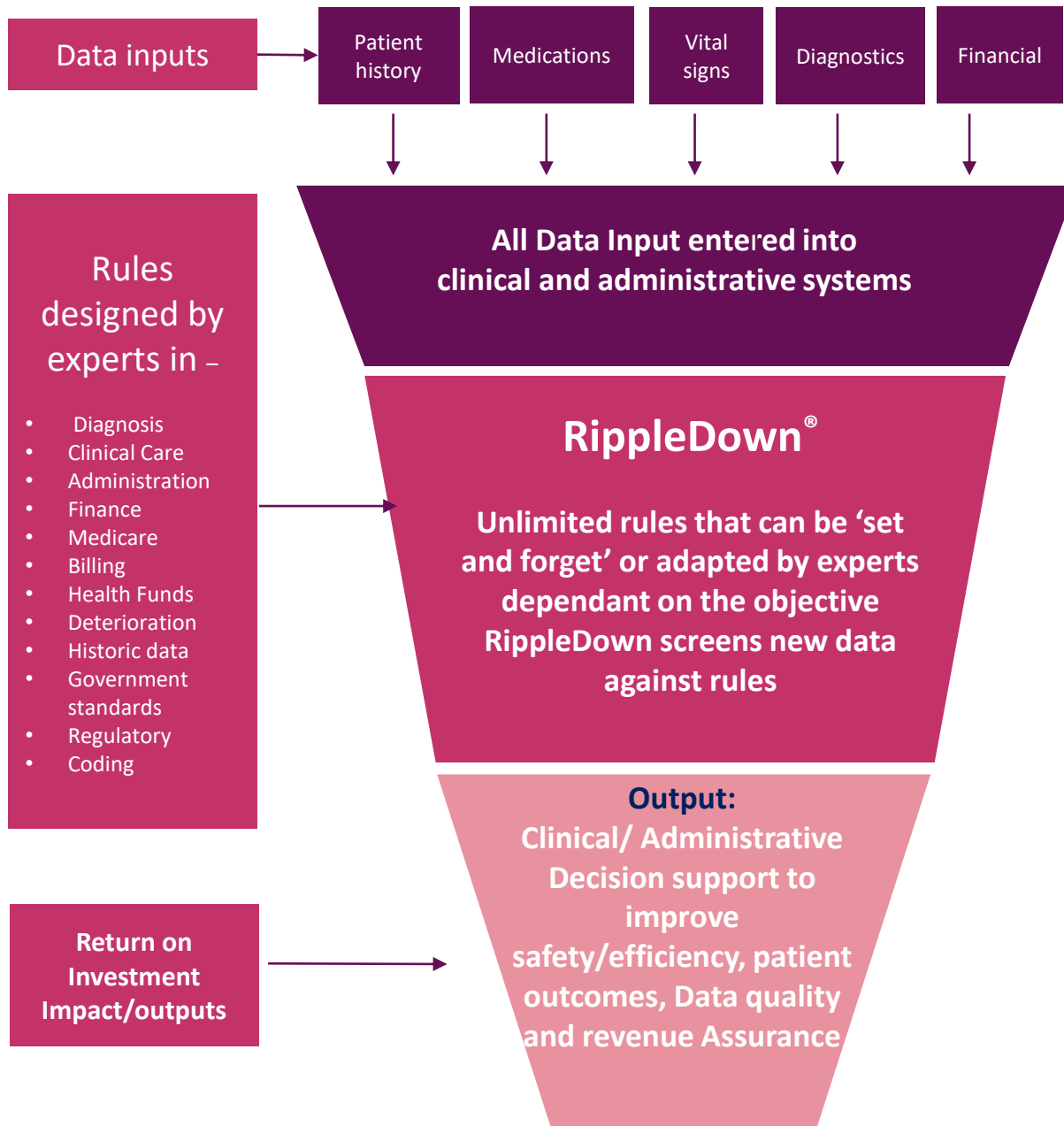
How we create value: the Learning Health System

Driving continuous improvement by better access to healthcare information – towards safety, quality and efficiency.

Beamtree Product Families



Product Focus - RippleDown



RippleDown application examples:

Traditional Application

1. RippleDown Diagnostics:

Clinical Decision Support (Expert and auditor)

- Creates efficient use of valuable expertise, making complex actions repeatable and scalable
- Minimises the chance of error and improves adherence to standards and efficient administration.

New Application

2. RippleDown Patient Care:

Ainsoff Deterioration Index and pathology alerts

- Clinical rules applied to patient events in real time to bring attention to potential deterioration or results needing action
- Minimises risk, and improves patient experience with a benefit to hospital resources

Emerging Application





3. RippleDown Coding:

Auto Coding (proof of concept phase) and Ainsoff 2

- Creates automated summation of patient record, recognises patterns of care to support assisted or automated coding
- Reduces risk of missed information and maximises event capture for reporting and planning, impacting funding and care

More rules = greater specificity, greater efficiency and safety gains, and more value realised by the customer.

Beamtree products

	Product	Application	Problem Solved	ROI	Pricing/Scale
 Diagnostic technology	RippleDown Expert	Clinical rules to automate expert decision making in Diagnostics	Removes duplication for experts in providing diagnostic results	More value with less costly resources	Recurring License + volume based fee
	RippleDown Auditor	Financial and Admin rules to automate data administration for Diagnostics	Removes data errors contributing to financial loss	Fewer data errors/ lower bad debts	
 Coding and data quality assurance	RippleDown Coding	Rules to summarise patient activity for ICD 10 coding standards reporting	Reduces human bottle neck in clinical record coding	Automation for patient summaries; Support continued automation in coding processes	Recurring licence fee based on volumes
	PICQ / RISQ	Audit / benchmark tool to check and recognise activity for accurate coding / highlight risk for intervention	Reduces error and increases standardisation in coding for revenue and quality assurance	Timely, more complete and accurate information	
 Clinical decision support (CDS)	Ainsoff Powered by RippleDown	Clinical rules with machine learning to measures patient deterioration	CDS for predicting risk in acute patients, alerting clinical staff	Better patient care, less ICU admissions and a safety net for clinical teams	Recurring licence fee
		Clinical rules with machine learning to monitor and alert to critical results	Prevents missed diagnostics, ensures patients get the better care	Keeps patients safe, minimises clinical risk and staff supported	
 Analytics and knowledge networks	Health Roundtable Ability Roundtable Global Health Comparators	Combines data analytics solutions with peer-to-peer alliances	Accelerates innovation and knowledge diffusion amongst industry peers	Ensures best-in-class performance across industry peers leading to better patient outcomes	Subscription revenue
	Analytics as a service	Specialty areas of analysis based on client needs, focus on health safety quality and efficiency	Helps clients access and visualise the activity, safety and performance of their services	Immediate reporting efficiencies, clarity for improvement. Provides business case for secondary soln.	

Beamtree trading update - *New Contract Wins*

Going Forward:

 <p>Diagnostic technology</p>	<ul style="list-style-type: none"> • Ampath five-year RippleDown® contract agreed: new long-term strategic partnership • Lancet Laboratories two-year contract renewal: renewed its diagnostic technology contract relationship of 10 years • First contract to trial RippleDown® in a major UK NHS pathology network: two hospitals to implement a six-month proof of concept to trial RippleDown® across their pathology services network • Abbott Laboratories Inc. partnership extended: continuing (transition) agreement signed with Abbott with both parties committed to a long-term partnership 	<ul style="list-style-type: none"> • ~30% of FY22 revenue • Focus on international expansion to drive accelerated growth • Key growth area • Positive cashflow
 <p>Automation of coding and data entry</p>	<ul style="list-style-type: none"> • Queensland trial of Beamtree automation of coding: new strategic partnership to trial new Beamtree technology to automate clinical record coding • Trials of Beamtree automation of coding in two leading NHS Trusts in England: secured 12-month proof of concept contracts to trial Beamtree’s automation of coding technologies • New wins and 99% renewal rate in core PICQ and RISQ products: confirming the importance of the product in helping health services manage quality and financial efficiency during the Pandemic 	<ul style="list-style-type: none"> • ~20% of FY22 revenue • New product investment in Auto coding in FY23 using RippleDown®
 <p>Clinical decision support</p>	<ul style="list-style-type: none"> • Key contract agreed with Sydney Adventist hospital for AI decision support in hospital care: multi-year contract to help address patient deterioration and support urgent care • Central Adelaide goes to live trial of Ainsoff Deterioration Index after successful proof of concept: first public hospital implementation of the Ainsoff Index implemented across four wards • International contracts for trial adoption of AI decision support in hospitals: contracts agreed to trial and evaluate the Ainsoff Deterioration Index with leading English NHS hospitals with a strong international pipeline for AI decision support 	<ul style="list-style-type: none"> • <5% of FY22 revenue • FY23 focus to productise new CDS Ainsoff products • CDS expected to drive growth from 2023 onwards
 <p>Analytics and knowledge networks</p>	<ul style="list-style-type: none"> • Partnerships with Health Roundtable and Ability Roundtable, cross over growth the Global Health comparators: performance of Potential(x) is consistent with the expectations at the time of acquisition with renewals for Health Roundtable tracking at historical levels (~94%) and Ability Roundtable’s Allied Health product has been renewed for another 12 months with a 21% increase in subscriptions and a total annual revenue YOY increase of 41% addition of Global Health comparators for expansion in new territories 	<ul style="list-style-type: none"> • ~45% of revenue • Mature, stable revenue stream • Positive cashflow • Exploring international expansion

Supporting healthcare providers globally



50m+

people supported by Beamtree implementations every year

1000+
Hospitals

155+
Labs

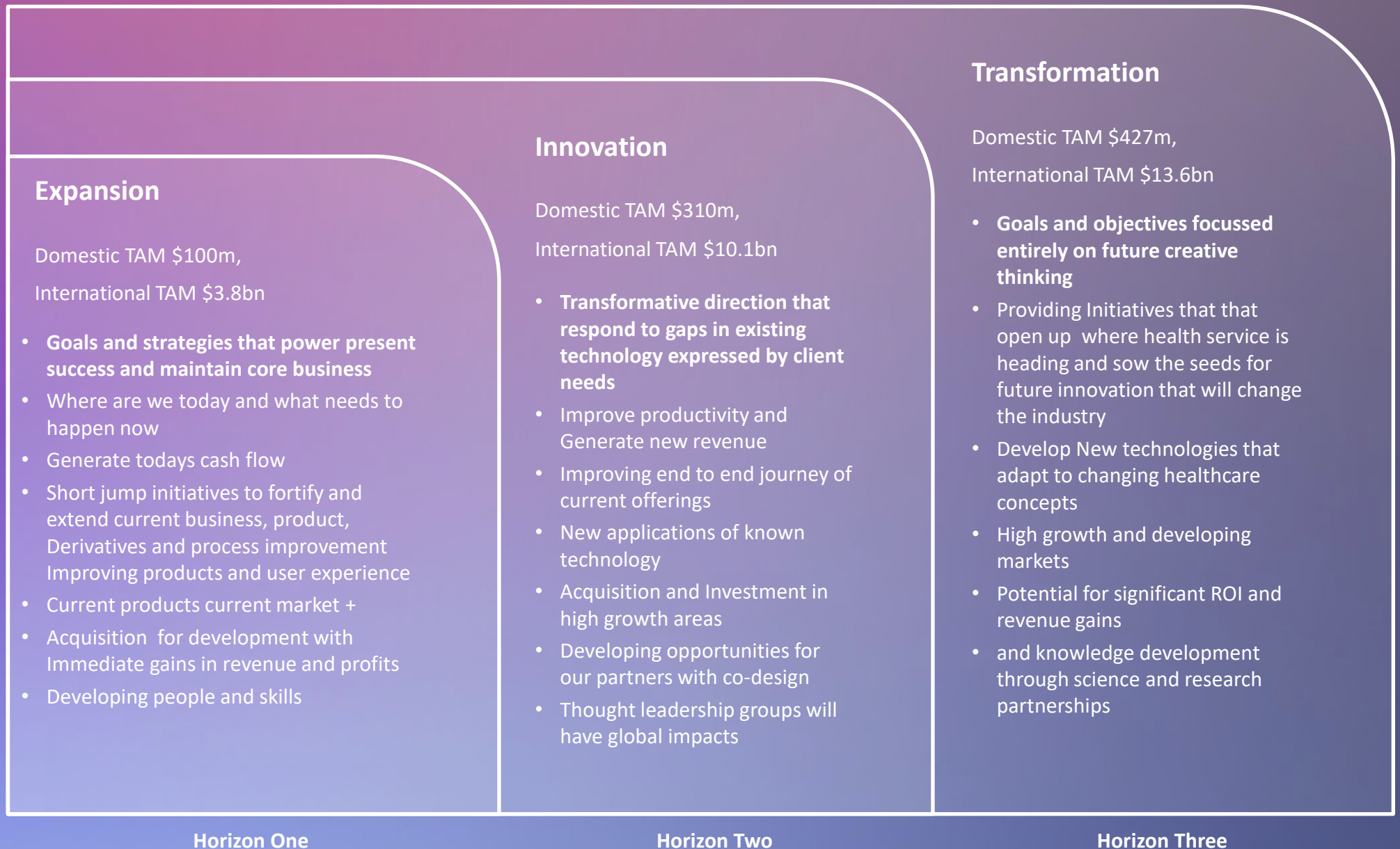
705+
Hospitals

4
Continents

23
Countries

140+
Customers

Driving Beamtree's future growth



Financial Summary 1H FY22

Growth and investment was the focus for the first half of FY22, despite ongoing challenges presented by the COVID-19 pandemic. Thanks to strong revenue performance and excellent customer retention rates, we were able to make significant investments across the business within our budgeted forecast. Our position remains strong as we enter the second half of FY22.

Strong total revenue performance \$7.1 million

\$7.1 million

+91% growth in group's revenue and 24% YoY growth exc. acquisitions

Recurring revenue

85%

Exceeded management forecast

Net cash of

\$6.5 million

Position remains strong

ARR (annual recurring revenue) at 31 Dec 2021

\$16.8 million

Continued annualised recurring revenue growth YoY

Operational EBITDA loss of

\$0.5 million

Investment in headcount for sales, product and technology capabilities

Customer Renewal

100%

Globally

Important Notice and Disclaimer

The material in this presentation is general background information about Beamtree Holdings Limited (ASX:BMT) and is current at the date of the presentation, 15 February 2022.

This presentation may contain statements that are, or may be deemed to be, forward looking statements. Such statements can generally be identified by the use of words such as “believe”, “estimate”, “plan”, “target”, “project”, “anticipate”, “expect”, “intend”, “likely”, “may”, “will”, “could” or “should” and similar expressions. Indications of strategy, plans, objectives, targets, goals, future events or intentions are also forward looking statements.

You should not place undue reliance on such forward-looking statements. Such forward looking statements are not guarantees of future performance and involve known and unknown risks, uncertainties and other factors, many of which are beyond the control of BMT or any of its related entities which may cause actual results to differ materially from those expressed or implied in such statements.

No representation or warranty, express or implied, is made as to the accuracy, reliability, adequacy or completeness of the information contained in this presentation. Past performance information in this presentation is given for illustrative purposes only and should not be relied upon as (and is not) an indication of future performance.

The information in the presentation is given for informational purposes only, is in summary form and does not purport to be complete. It is intended to be read by a professional analyst audience in conjunction with BMT’s other announcements to ASX. It is not intended to be relied upon as advice to current shareholders, investors or potential investors and does not take into account the investment objectives, financial situation or needs of any particular shareholder or investor. No representation is made as to the accuracy, completeness or reliability of the presentation.

The views expressed in this presentation may contain information that has been derived from publicly available sources that have not been independently verified. No representation or warranty, express or implied, is made as to the accuracy, reliability, adequacy or completeness of the information. Market share information is based on management estimates except where explicitly identified.

To the maximum extent permitted by law, BMT and any person involved in the preparation of this presentation disclaim all liability and responsibility (including without limitation, any liability arising from fault or negligence) for any direct or indirect loss or damage which may arise or be suffered through use or reliance on anything contained in, or omitted from, this presentation.

BMT is not obliged to, and does not represent that it will, update the presentation for future developments. All currency figures are in Australian dollars unless otherwise stated. Totals may not add up precisely due to rounding.

