

Recommended



Recommended



Subscribe to our latest news and insights



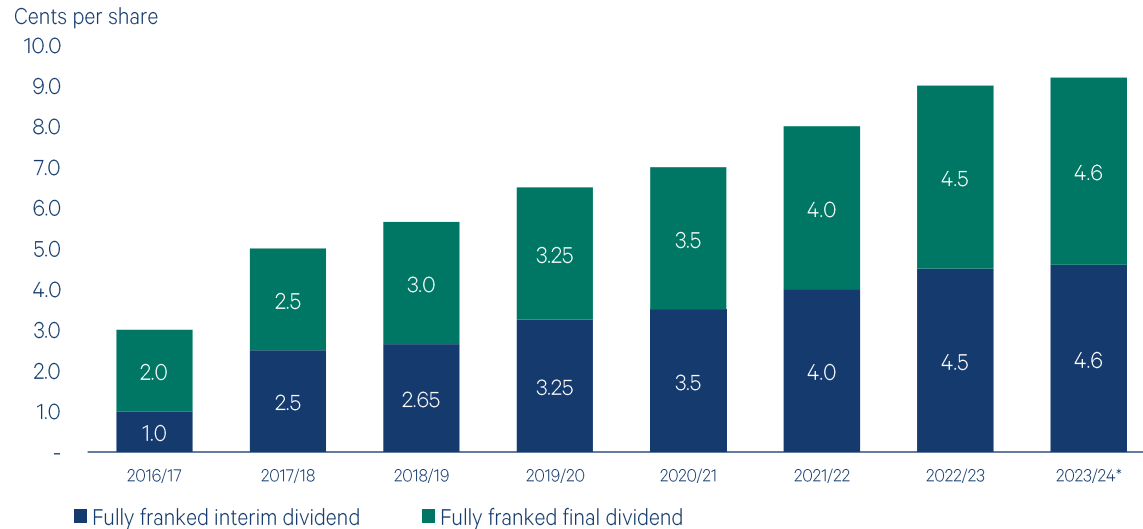
## June 2024 Investment Update

### Net Tangible Assets (NTA) per share

June 2024

NTA before tax	133.60c
NTA after tax and before tax on unrealised gains	132.35c
NTA after tax	134.04c

### Fully franked dividends since inception



\*The Board intends to deliver a FY2024 fully franked full year dividend of 9.2 cents per share.

[Read Lead Portfolio Manager Matthew Haupt's views on Star's new CEO](#)



[Listen to Senior Investment Analyst Anna Milne's interview with Sky News](#)



<p>Grossed-up dividend yield</p> <p>10.4%<sup>^</sup></p>	<p>Dividend coverage</p> <p>3.2 years</p>	<p>Investment portfolio performance (pa since inception May 2016)</p> <p>12.5%<sup>**</sup></p> <p>S&amp;P/ASX 200 Accumulation Index: 8.9%</p>
<p>Dividends paid since inception (per share)</p> <p>48.75c</p>	<p>Profits reserve (per share)</p> <p>29.5c</p>	<p>Assets</p> <p>\$1.7bn</p>

<sup>^</sup>Grossed-up dividend yield is based on the FY2024 fully franked full year dividend guidance of 9.2 cents per share<sup>e</sup> and 28 June 2024 share price of \$1.265 per share, includes the benefits of franking credits and is based on a tax rate of 30%.  
<sup>\*\*</sup>Investment portfolio performance is before expenses, fees, taxes and the impact of capital management initiatives to compare to the relevant index which is before expenses, fees and taxes.

# W | A | M Leaders

ASX: WLE

[Subscribe to our latest news and insights](#)

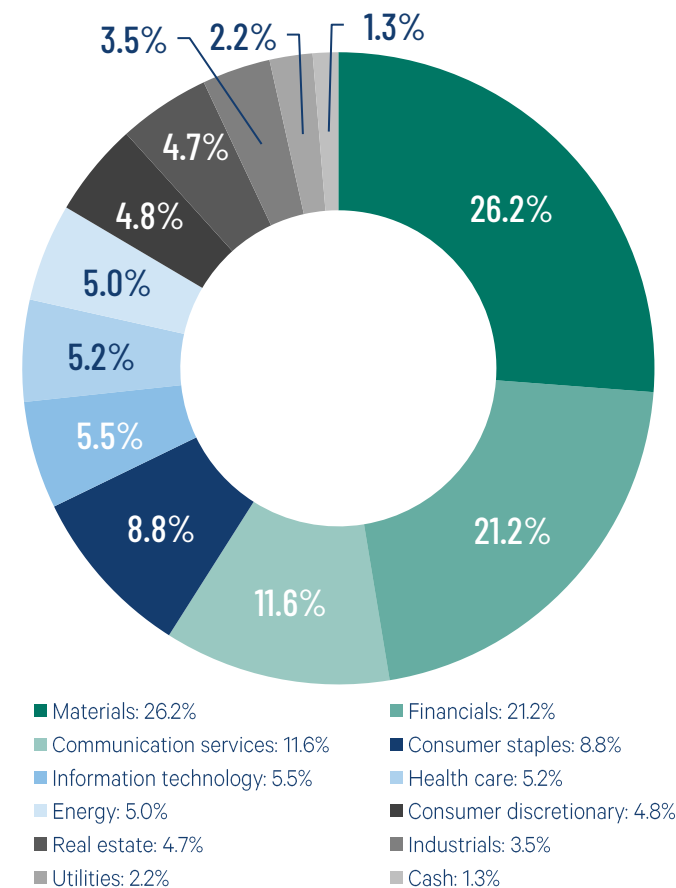


[Interim Result](#) [Interim Financial Report](#)

## Top 20 holdings (alphabetical order)

Code	Company Name
BHP	BHP Group
CBA	Commonwealth Bank of Australia
CGF	Challenger
CSL	CSL
IAG	Insurance Australia Group
MQG	Macquarie Group
NAB	National Australia Bank
ORA	Orora
QBE	QBE Insurance Group
RIO	Rio Tinto
S32	South32
SGR	The Star Entertainment Group
SPK	Spark New Zealand
STO	Santos
TLS	Telstra Group
TWE	Treasury Wine Estates
WBC	Westpac Banking Corporation
WOW	Woolworths Group
WTC	WiseTech Global
XRO	Xero

## Diversified investment portfolio by sector

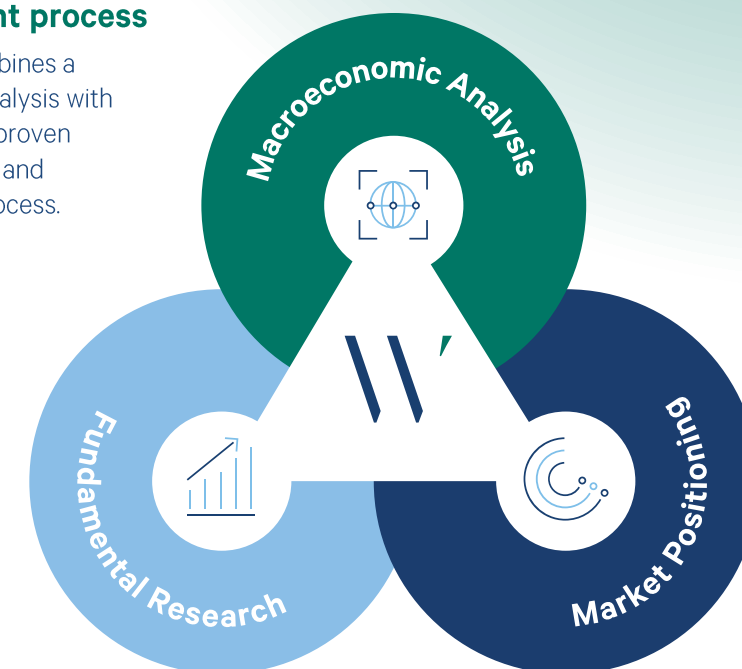


## Listed on the ASX in 2016

Access to an active investment process focused on identifying large-cap companies with compelling fundamentals, a robust macroeconomic thematic and a catalyst. WAM Leaders' investment objectives are to deliver a stream of fully franked dividends, provide capital growth and preserve capital.

## Our proven investment process

The investment process combines a top-down macroeconomic analysis with Wilson Asset Management's proven fundamental research-driven and market-driven investment process.





Subscribe to our latest news and insights



### About the Investment Manager

Wilson Asset Management has a track record of making a difference for shareholders and the community for over 25 years.

As the investment manager for eight leading listed investment companies (LICs), Wilson Asset Management has a diversified offering of Australian and global listed equities and alternative assets.

Wilson Asset Management created and is the lead supporter of the first LICs to deliver both investment and social returns: Future Generation Australia (ASX: FGX) and Future Generation Global (ASX: FGG).

**>\$5bn**  
in funds  
under  
management

**130,000**  
retail and  
wholesale  
investors

**>200 YEARS**  
combined  
investment  
experience

W | A | M Capital

W | A | M Leaders

W | A | M Global

W | A | M Microcap

W | A | M Alternative Assets

W | A | M Strategic Value

W | A | M Research

W | A | M Active

For more information visit  
**[www.wilsonassetmanagement.com.au](http://www.wilsonassetmanagement.com.au)**  
or contact:

**Geoff Wilson AO**  
Chairman & Chief  
Investment Officer

**Kate Thorley**  
Chief Executive  
Officer

X (Twitter)  
[@GeoffWilsonWAM](https://twitter.com/GeoffWilsonWAM)  
(02) 9247 6755

0405 115 644

**Jesse Hamilton**  
Chief Financial  
Officer

**Samantha Philp**  
Head of Corporate  
Affairs & Marketing

0401 944 807

0410 696 730

#### Lonsec

The rating issued 10/2023 for WAM Leaders Limited is published by Lonsec Research Pty Limited ABN 11 151 658 561 AFSL 421 445 (Lonsec). Ratings are general advice only, and have been prepared without taking account of your objectives, financial situation or needs. Consider your personal circumstances, read the product disclosure statement and seek independent financial advice before investing. The rating is not a recommendation to purchase, sell or hold any product. Past performance information is not indicative of future performance. Ratings are subject to change without notice and Lonsec assumes no obligation to update. Lonsec uses objective criteria and receives a fee from the Fund Manager. Visit <https://www.lonsec.com.au/> for ratings information and to access the full report. © 2024 Lonsec. All rights reserved.

#### Zenith Disclaimer

The Zenith Investment Partners (ABN 27 103 132 672, AFS Licence 226872) ("Zenith") rating (ASX: WLE assigned June 2023) referred to in this piece is limited to "General Advice" (s766B Corporations Act 2001) for Wholesale clients only. This advice has been prepared without taking into account the objectives, financial situation or needs of any individual, including target markets of financial products, where applicable, and is subject to change at any time without prior notice. It is not a specific recommendation to purchase, sell or hold the relevant product(s). Investors should seek independent financial advice before making an investment decision and should consider the appropriateness of this advice in light of their own objectives, financial situation and needs. Investors should obtain a copy of, and consider the PDS or offer document before making any decision and refer to the full Zenith Product Assessment available on the Zenith website. Past performance is not an indication of future performance. Zenith usually charges the product issuer, fund manager or related party to conduct Product Assessments. Full details regarding Zenith's methodology, ratings definitions and regulatory compliance are available on our Product Assessments and at [Fund Research Regulatory Guidelines](#).

#### Independent Investment Research (IIR) Disclaimer

The rating ascribed by IIR is provided under the Annual LIC Research Participation Scheme whereby the LIC Manager provides information and IIR rating is monitored on a monthly basis to ensure its currency. The manager is a participant and as such this rating is current. Please note an ascribed rating does not constitute advice in any form. We recommend to any reader that no investment decisions are made on this fund without seeking advice from your Wealth Manager.