

Recommended



Recommended



Recommended



Subscribe to our latest news and insights



July 2024 Investment Update

The NTA before tax is after the provision for tax of \$16.7m (1.22 cents per share) for the 2024 financial year.

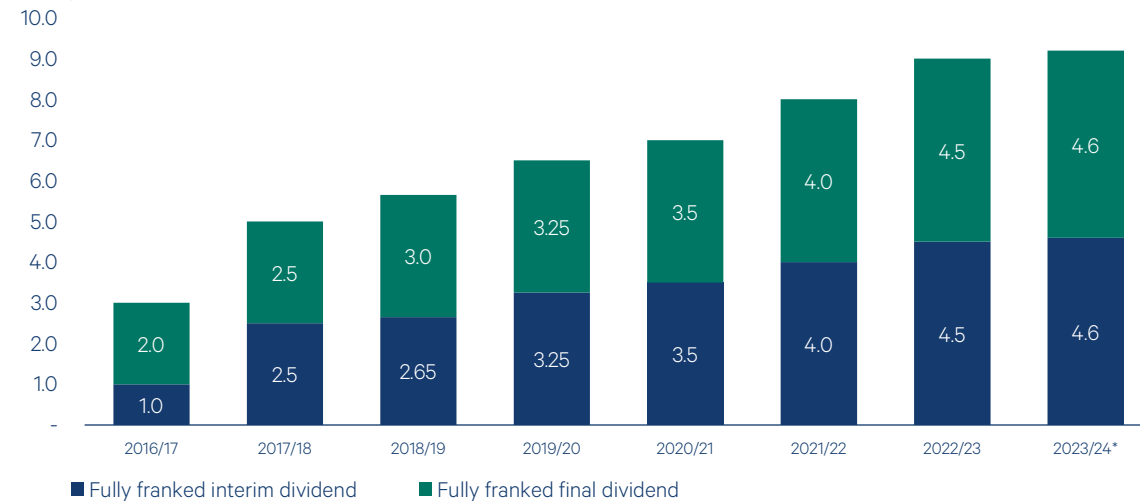
Net Tangible Assets (NTA) per share

July 2024

NTA before tax	137.49c
NTA after tax and before tax on unrealised gains	137.54c
NTA after tax	137.52c

Fully franked dividends since inception

Cents per share



[Watch the ABC News The Business interview with Anna Milne](#)



[Watch the Commsec Executive Series interview with Anna Milne](#)



<p>Grossed-up dividend yield</p> <p>10.3%[^]</p>	<p>Dividend coverage</p> <p>3.4 years</p>	<p>Investment portfolio performance (pa since inception May 2016)</p> <p>13.0%^{**} S&P/ASX 200 Accumulation Index: 9.3%</p>
<p>Dividends paid since inception (per share)</p> <p>48.75c Including the value of franking credits: 69.6c</p>	<p>Profits reserve (per share)</p> <p>31.0c</p>	<p>Assets</p> <p>\$1.9bn</p>

[^]Grossed-up dividend yield is based on the FY2024 fully franked full year dividend guidance of 9.2 cents per share* and 31 July 2024 share price of \$1.275 per share, includes the benefits of franking credits and is based on a tax rate of 30%.
^{**}Investment portfolio performance is before expenses, fees, taxes and the impact of capital management initiatives to compare to the relevant index which is before expenses, fees and taxes.

*The Board intends to deliver a FY2024 fully franked full year dividend of 9.2 cents per share.

W | A | M Leaders

ASX: WLE

[Subscribe to our latest news and insights](#)

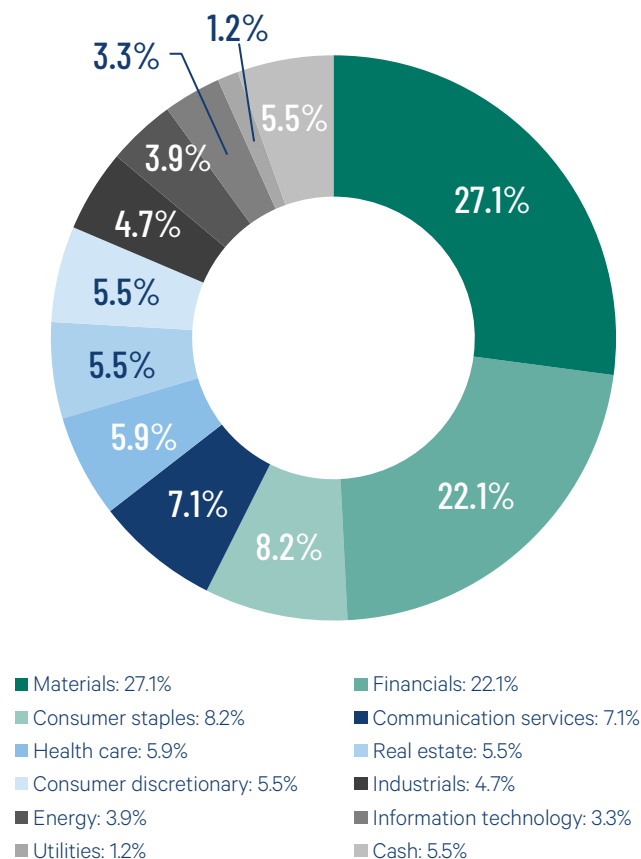


[Interim Result](#) [Interim Financial Report](#)

Top 20 holdings (alphabetical order)

Code	Company Name
BHP	BHP Group
CBA	Commonwealth Bank of Australia
CGF	Challenger
COL	Coles Group
CSL	CSL
DXS	Dexus
FMG	Fortescue
IAG	Insurance Australia Group
MPL	Medibank Private
MQG	Macquarie Group
ORA	Orora
RIO	Rio Tinto
RMD	ResMed Inc
S32	South32
SGR	The Star Entertainment Group
STO	Santos
TLS	Telstra Group
TWE	Treasury Wine Estates
WBC	Westpac Banking Corporation
WOW	Woolworths Group

Diversified investment portfolio by sector

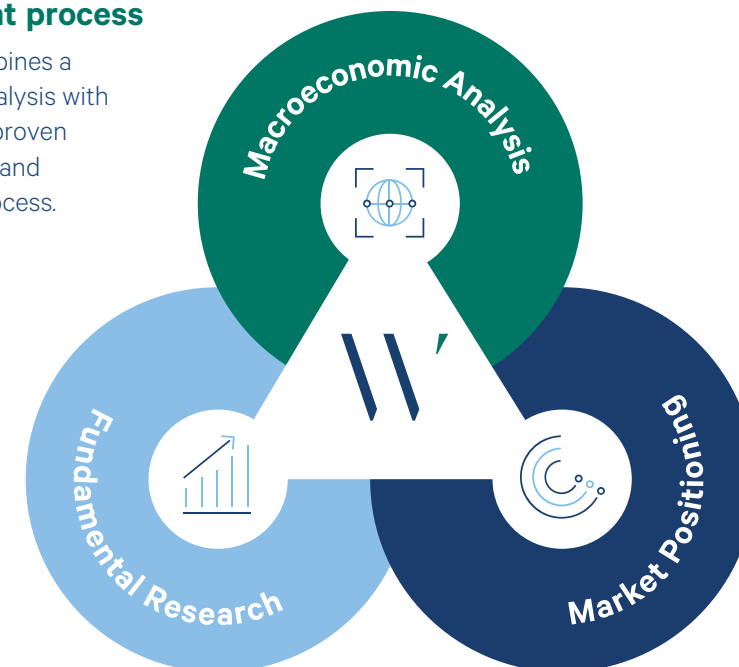


Listed on the ASX in 2016

Access to an active investment process focused on identifying large-cap companies with compelling fundamentals, a robust macroeconomic thematic and a catalyst. WAM Leaders' investment objectives are to deliver a stream of fully franked dividends, provide capital growth and preserve capital.

Our proven investment process

The investment process combines a top-down macroeconomic analysis with Wilson Asset Management's proven fundamental research-driven and market-driven investment process.





Subscribe to our latest news and insights



About the Investment Manager

Wilson Asset Management has a track record of making a difference for shareholders and the community for over 25 years.

As the investment manager for eight leading listed investment companies (LICs), Wilson Asset Management has a diversified offering of Australian and global listed equities and alternative assets.

Wilson Asset Management created and is the lead supporter of the first LICs to deliver both investment and social returns: Future Generation Australia (ASX: FGX) and Future Generation Global (ASX: FGG).

>\$5bn
in funds
under
management

130,000
retail and
wholesale
investors

>200 YEARS
combined
investment
experience

W | A | M Capital

W | A | M Leaders

W | A | M Global

W | A | M Microcap

W | A | M Alternative Assets

W | A | M Strategic Value

W | A | M Research

W | A | M Active

For more information visit
www.wilsonassetmanagement.com.au
or contact:

Geoff Wilson AO
Chairman & Chief
Investment Officer

X (Twitter)
[@GeoffWilsonWAM](https://twitter.com/GeoffWilsonWAM)
(02) 9247 6755

Jesse Hamilton
Chief Financial
Officer

0401 944 807

Kate Thorley
Chief Executive
Officer

0405 115 644

Camilla Cox
Corporate Affairs
Manager

0407 407 062

Lonsec

The rating issued 10/2023 for WAM Leaders Limited is published by Lonsec Research Pty Limited ABN 11 151 658 561 AFSL 421 445 (Lonsec). Ratings are general advice only, and have been prepared without taking account of your objectives, financial situation or needs. Consider your personal circumstances, read the product disclosure statement and seek independent financial advice before investing. The rating is not a recommendation to purchase, sell or hold any product. Past performance information is not indicative of future performance. Ratings are subject to change without notice and Lonsec assumes no obligation to update. Lonsec uses objective criteria and receives a fee from the Fund Manager. Visit <https://www.lonsec.com.au/> for ratings information and to access the full report. © 2024 Lonsec. All rights reserved.

Zenith Disclaimer

The Zenith Investment Partners (ABN 27 103 132 672, AFS Licence 226872) ("Zenith") rating (ASX: WLE assigned June 2024) referred to in this piece is limited to "General Advice" (s766B Corporations Act 2001) for Wholesale clients only. This advice has been prepared without taking into account the objectives, financial situation or needs of any individual, including target markets of financial products, where applicable, and is subject to change at any time without prior notice. It is not a specific recommendation to purchase, sell or hold the relevant product(s). Investors should seek independent financial advice before making an investment decision and should consider the appropriateness of this advice in light of their own objectives, financial situation and needs. Investors should obtain a copy of, and consider the PDS or offer document before making any decision and refer to the full Zenith Product Assessment available on the Zenith website. Past performance is not an indication of future performance. Zenith usually charges the product issuer, fund manager or related party to conduct Product Assessments. Full details regarding Zenith's methodology, ratings definitions and regulatory compliance are available on our Product Assessments and at [Fund Research Regulatory Guidelines](#).

Independent Investment Research (IIR) Disclaimer

The rating ascribed by IIR is provided under the Annual LIC Research Participation Scheme whereby the LIC Manager provides information and IIR rating is monitored on a monthly basis to ensure its currency. The manager is a participant and as such this rating is current. Please note an ascribed rating does not constitute advice in any form. We recommend to any reader that no investment decisions are made on this fund without seeking advice from your Wealth Manager.